

Swinford

Texture is
provided by
the Knot Stitch
pattern





Judy Furlong
Swinford

“THIS LOVELY yarn from New Lanark Mills inspired the tweedy look of my fitted jacket with a lace edge detail,” says Judy Furlong. “The Knot Stitch is very simple to do, the most tricky part being counting the rows, which is most easily done on the wrong side. The lace for the edges on collar and cuffs is also fairly straightforward, but the jacket will work perfectly well without it.”

The instruction for the lace edge of the cuff is to cast on and off with waste yarn then graft the edges together, but if you prefer, simply cast on and off in Yarn A and sew the edges together.

BODY

With 5.5mm needles and yarn A, cast on 153 (159:167:175:183:191:199:211:219:227) sts.

Row 1 (RS): Purl.

Row 2: Knit.

Change to 6mm needles and work in Knot Stitch as foll:

Row 1 (RS): Knit.

Row 2 (WS): K1, *KS; rep from * to end.

Row 3: Knit.

Row 4: *KS; rep from * to last st, K1.

Last 4 rows set Knot St patt. Repeat the last 4 rows twice more.

Row 13: K10 (10:11:11:12:13:13:14:15:16), pm (Right Front marker), K25 (26:27:29:30:31:33:35:36:37), K2tog, pm (Right Side marker), SSK, K25 (26:27:29:30:31:33:35:36:37), pm (Right Back marker), K25 (27:29:29:31:33:33:35:37:39), pm (Left Back marker), K25 (26:27:29:30:31:33:35:36:37), K2tog, pm (Left Side marker), SSK, K25 (26:27:29:30:31:33:35:36:37), pm (Left Front marker), K10 (10:11:11:12:13:13:14:15:16).

SIZE

	8	10	12	14	16	18	20	22	24	26	
TO FIT BUST	81	86	91	97	102	107	112	117	122	127	cm
	32	34	36	38	40	42	44	46	48	50	in
ACTUAL BUST	92	96	101	106	111	116	121	128½	136	141	cm
	36¼	37¾	39¾	41¾	43¾	45¾	47¾	50½	53½	55½	in
ACTUAL LENGTH	67	67	68	68	69	69	70	70	71	71	cm
	26½	26½	26¾	26¾	27¼	27¼	27½	27½	28	28	in
SLEEVE SEAM	46	47	47	47	47	48	48	48	48	48	cm
	18	18½	18½	18½	18½	19	19	19	19	19	in

149 (155:163:171:179:187:195:207:215:223) sts. When marker lies between the two sts of a Knot Stitch, slip the first st off purlwise, drop the marker, slip st back onto LH needle, P2tog (leaving sts on LH needle), replace marker on RH needle, yfwd, K2tog. Work 3 more rows in patt.

Sizes 8 to 20 only

Row 17 (RS, front and back decs): Knit to Right Front marker, slm, K1, CDD, knit to 4 sts before Right Back marker (slipping Right Side marker), CDD, K1, slm, knit to Left Back marker, slm, K1, CDD, knit to 4 sts before Left Front marker (slipping Left Side marker), CDD, K1, slm, knit to end.

141 (147:155:163:171:179:187:--:--:--) sts.

Work 3 more rows in patt.

Row 21 (RS, front and back decs): Knit to 4 sts before Right Front marker, CDD, K1, slm, knit to Right Back marker, slm, K1, CDD, knit to 4 sts before Left Back marker, CDD, K1, knit to Left Front marker, slm, K1, CDD, knit to end.

133 (139:147:155:163:171:179:--:--:--) sts.

Work 3 more rows in patt.

Sizes 22 to 26 only

Work 8 rows in patt.

All sizes

Row 25 (RS, side decs): Knit to 2 sts before Right side marker, K2tog, slm, SSK, knit to 2 sts before Left Side marker, K2tog, slm, SSK, knit to end.

129 (135:143:151:159:167:175:203:211:219) sts.

Rows 26 to 28: Patt 3 rows.

Row 29 (back decs): Knit to 3 sts before Right Back marker CDD, slm, knit to Left Back marker, slm, CDD, knit to end.

125 (131:139:147:155:163:171:199:207:215) sts. Work 3 more rows in patt.

Row 33 (front decs): Knit to Right Front marker, slm, CDD, knit to 3 sts before Left Front marker, CDD, slm, knit to end.

121 (127:135:143:151:159:167:195:203:211) sts.

Keeping patt correct as set, and working decs as set above, dec 1 st either side of both side markers on 4th row, dec 2 sts at both back markers on foll 4th row and dec 2 sts at both front markers on foll 4th row.

109 (115:123:131:139:147:155:183:191:199) sts. Work 3 more rows without shaping. Mark both ends and position of Side Markers on the last of these rows (waistline).

WAIST TO ARMHOLE

Row 1 (RS, side incs): Knit to Right Front marker, mark this point (for pocket placement), slm, knit to 1 st before Right Side marker, KFB, slm, KFB, knit to 1 st before Left Side marker, KFB, slm, KFB, knit to Left Front marker, mark this point (for pocket placement), slm, knit to end.

113 (119:127:135:143:151:159:187:195:203) sts.

Work 5 more rows in patt.

Sizes 8 to 20 only

Keeping patt correct, inc 1 st either side of both front markers on next and foll 12th row and AT THE SAME TIME, inc 1 st either side of both back markers on foll 7th row.

125 (131:139:147:155:163:171:--:--:--) sts.

Work 1 row without shaping.

Size 22 only

Rows 7 to 20: Patt 14 rows without shaping.

Sizes 24 and 26 only

Keeping patt correct, work 12 rows without

YARN

New Lanark Mills Donegal Silk Tweed Aran (Aran weight; 90% pure new wool, 10% silk; 160m/174yds per 100g ball)

A SWINFORD*	6	7	7	7	8	8	9	9	10	10	x100g BALLS
-------------	---	---	---	---	---	---	---	---	----	----	-------------

New Lanark Mills Donegal Silk Tweed DK (DK weight; 90% pure new wool, 10% silk; 120m/131yds per 50g ball)

B SWINFORD*	1	1	1	1	1	1	1	1	1	1	x50g BALLS
C COBALT	1	1	1	1	1	1	1	1	1	1	x50g BALLS
D COPPER BLUE	1	1	1	1	1	1	1	1	1	1	x50g BALLS

*Since components of Swinford are undyed, the Aran and DK weights will not be exactly the same shade. This is allowed for in the pattern as the DK weight is only used in conjunction with the two other DK yarns.

NEEDLES & ACCESSORIES

1 pair 4.5mm (UK 7/US 7) knitting needles
 1 pair 5.5mm (UK 5/US 9) knitting needles
 1 pair 6mm (UK 4/US 10) knitting needles
 Stitch and row markers or scraps of waste yarn
 Holders or waste yarn
 4 buttons, approx. 2.8cm diameter

TENSION

16 sts and 20 rows to 10cm over Knot Stitch using 6mm needles and aran-weight yarn. (It is easier to count the rows of Knot Stitch on the WS.)
 24 sts and 48 rows to 10cm over Moss Slip Stitch using 4.5mm needles and DK-weight yarn.

shaping, then inc 1 st either side of both front markers on next row.
 -(-:-:-:-:-:-:199:207) sts.
 Work 1 row without shaping.

All sizes

Keeping patt correct, inc 1 st either side of both side markers on next row, then inc 1 st either side of back markers on foll 4th row, and inc 1 st either side of both front markers on foll 4th row (9 rows worked in total).
 137 (143:151:159:167:175:183:199:211:219) sts.

Sizes 8 to 20 only

Work 5 rows without shaping. Keeping patt correct, inc 1 st either side of both back markers on next row.
 141 (147:155:163:171:179:187:--:-) sts.
Rows 36 to 46: Patt 11 rows (ending with RS facing) without further shaping.

Sizes 22 to 26 only

Rows 30 to 46: Patt 17 rows (ending with RS facing) without further shaping.

ARMHOLES AND DIVIDE FOR FRONTS AND BACK

Row 1 (RS): K34 (35:37:39:41:43:45:48:51:53), slip these sts onto a holder and set aside for Right Front. Cast off 3 (4:4:4:5:5:5:6:6:6), K70 (73:77:81:84:88:92:97:103:107) (including st remaining after cast off). Slip remaining 34 (35:37:39:41:43:45:48:51:53) sts onto a holder and set aside for Left Front, turn.

Row 2: Cast off 3 (4:4:4:5:5:5:6:6:6) sts, patt to end. 67 (69:73:77:79:83:87:91:97:101) sts. Cont on these sts only for Back.

Row 3: K1, K2tog, knit to last 3 sts, SSK, K1.

Row 4: K1, K2tog, patt to last 3 sts, SSK, K1. 63 (65:69:73:75:79:83:87:93:97) sts. ▶

For stockists and abbreviations, see p90



The lacy cuffs offer a pretty finishing touch

Swinford

SPECIAL ABBREVIATIONS

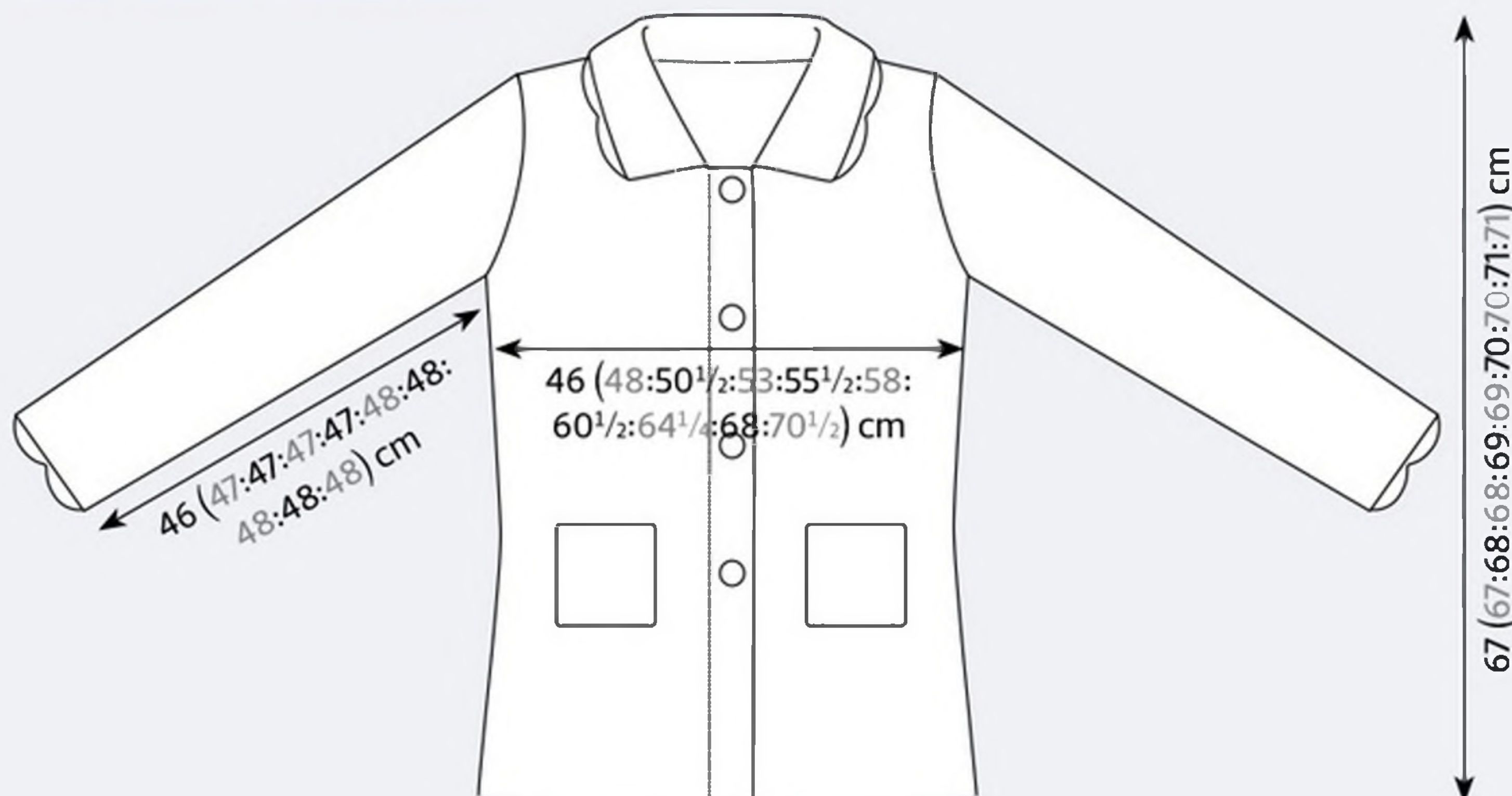
CDD: Central double decrease. From the front, insert tip of RH needle into second then first sts on LH needle as if to K2tog, slip these sts off without knitting them, knit the next st, insert tip of LH needle into the two slipped sts (left to right) and slip them over the knitted st.

KS: Knot Stitch. P2tog into the next two sts leaving the sts on the needle, then K2tog into the same two sts slipping both sts off the needle.

rm: remove marker.

w&t: wrap and turn. Take yarn to opposite side of work. Slip next st purlwise to RH needle. Return yarn to working side. Return st to LH needle without twisting it. Turn, ready to work next side.

BLOCKING DIAGRAM



Working all decs as set by last 2 rows, dec 1 st at each end of 3 (3:3:3:3:3:5:5:5:7) foll rows. 57 (59:63:67:69:73:73:77:83:83) sts. Dec 1 st at each end of 3 (3:4:5:5:6:5:6:8:8) foll alt rows. 51 (53:55:57:59:61:63:65:67:67) sts.

Work 13 (13:13:11:13:11:13:11:9:7) more rows without further shaping.

Next row (RS): KFB, knit to last 2 sts, KFB, K1.

Patt 3 rows.

Repeat the last 4 rows two more times.

57 (59:61:63:65:67:69:71:73:73) sts.

SHAPE SHOULDERS AND BACK NECK

Row 1 (RS): Cast off 7 (7:7:8:8:8:8:8:8), K16 (16:17:17:17:18:18:19:20:20) (including st remaining after cast-off). Slip the next 11 (13:13:13:15:15:17:17:17:17) sts onto a holder and set aside for Centre Back Neck, slip the remaining 23 (23:24:25:25:26:26:27:28:28) sts onto a holder and set aside for Left Back shoulder.

RIGHT BACK SHOULDER

Row 2 (WS): K2tog, patt to end.

Row 3: Cast off 7 (7:7:7:7:8:8:8:8), knit to last two sts, SSK.

7 (7:8:8:8:8:9:10:10) sts.

Row 4: As Row 2.

Cast off rem 6 (6:7:7:7:7:8:9:9) sts.

LEFT BACK SHOULDER

Row 1: With RS facing, rejoin yarn at beginning of Left Back shoulder sts and knit to end.

23 (23:24:25:25:26:26:27:28:28) sts.

Row 2 (WS): Cast off 7 (7:7:8:8:8:8:8:8) sts

purlwise, patt to last two sts, SSK. 15 (15:16:16:16:17:17:18:19:19) sts.

Row 3: K2tog, knit to end.

Row 4: Cast off 7 (7:7:7:7:8:8:8:8), purlwise, patt to last two sts, SSK.

6 (6:7:7:7:7:8:9:9) sts.

Row 5: Knit to end.

Cast off rem 6 (6:7:7:7:7:8:9:9) sts purlwise.

LEFT FRONT

With RS facing, rejoin yarn to Left Front sts on holder.

Row 1 (RS): Cast off 3 (4:4:4:5:5:5:6:6), knit to end.

31 (31:33:35:36:38:40:42:45:47) sts.

Row 2: Patt to end.

Row 3: K1, K2tog, knit to end.

Row 4: Patt to last 3 sts, SSK, K1.

Working all decs as set by last 2 rows, dec 1 st at armhole edge of foll 3 (3:3:3:3:3:5:5:7) rows. 26 (26:28:30:31:33:33:35:38:38) sts.

Dec 1 st at armhole edge of 3 (3:4:5:5:6:5:6:8:7) foll alt rows.

23 (23:24:25:26:27:28:29:30:31) sts.

Work 9 (9:7:5:7:5:5:3:1:1) rows without further shaping.

Size 26 only

Dec 1 st at each end of next row (final armhole dec and first neck dec). 29 sts. Mark neck edge of this row for start of collar.

All sizes

Dec 1 st at neck edge of next 3 (3:3:3:3:3:5:5:5:4) rows (mark first of these at neck edge for start of collar - except tenth size), then

dec 1 st at neck edge of foll 3 (3:3:3:4:4:3:3:3:3) alt rows and AT THE SAME TIME inc 1 st at armhole edge of 5th (5th:7th:7th:7th:7th:9th:9th:9th:8th) and 2 foll 4th rows. 20 (20:21:22:22:23:23:24:25:25) sts.

Work straight in patt until front matches back to start of shoulder shaping, ending with RS facing for next row.

SHAPE SHOULDER

Row 1 (RS): Cast off 7 (7:7:8:8:8:8:8:8), knit to end. 13 (13:14:14:14:15:15:16:17:17) sts.

Row 2: Patt to end.

Row 3: Cast off 7 (7:7:7:7:8:8:8:8), knit to end. 6 (6:7:7:7:7:8:9:9) sts.

Row 4: As row 2.

Cast off remaining 6 (6:7:7:7:7:8:9:9) sts.

RIGHT FRONT

With WS facing, rejoin yarn at right underarm, complete as for Left Front, reversing all shapings.

SLEEVES (both alike)

LACE UNDER-CUFF

With 4.5mm needles and waste yarn, cast on 6 sts. Work a few rows in st st. Change to yarn A.

Row 1 (WS): Reading from left to right, work row 1 of chart A.

Row 2 (RS): Reading from right to left, work row 2 of chart A.

Last 2 rows set chart A patt. Work as set until row 20 has been completed for the 5th time. Do not break yarn A, but change to waste yarn, and work a few rows in st st. Cast off with waste yarn.

Change to 5.5mm needles.

CHARTS

Chart A: Lace edging
(Row 1 is WS)

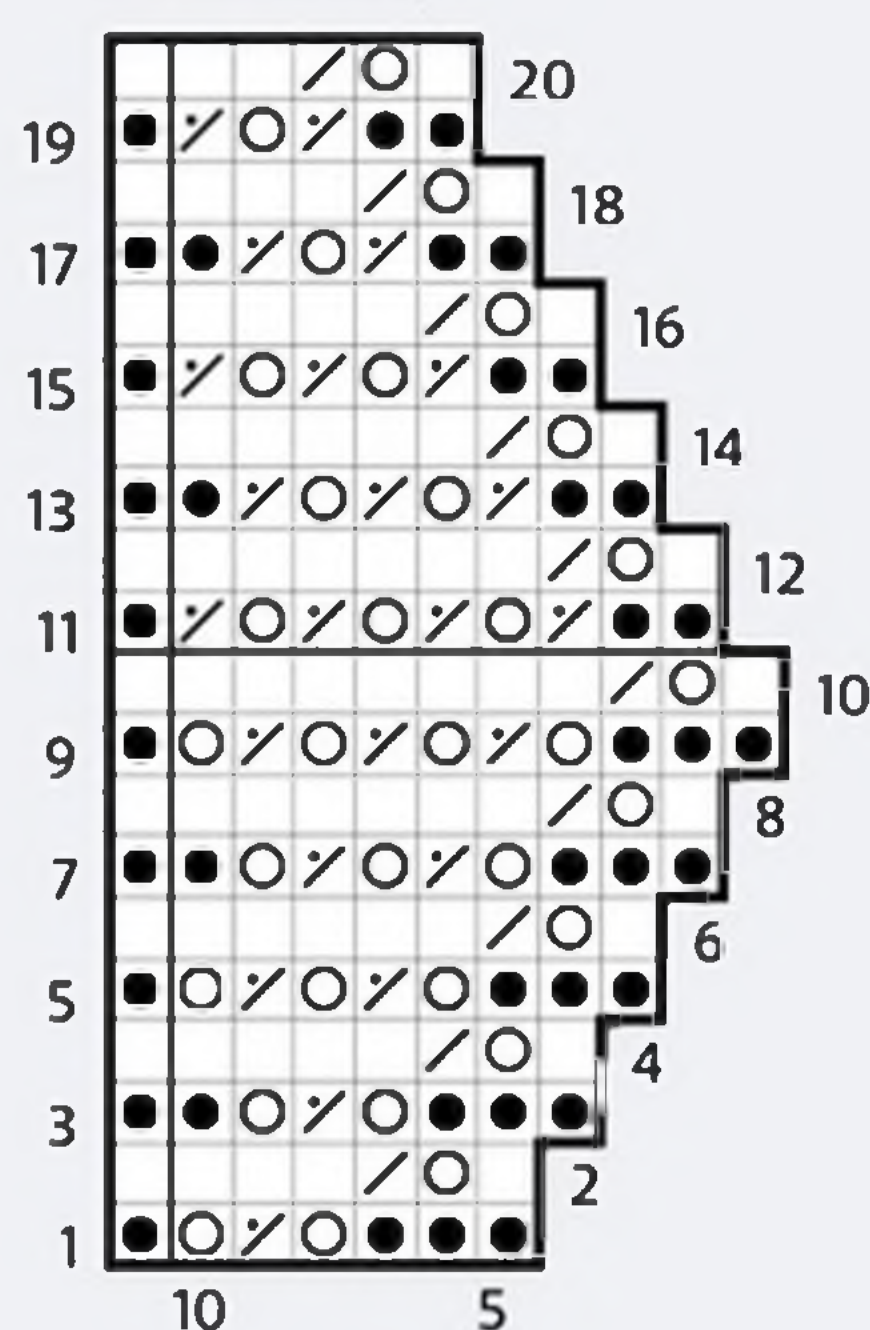
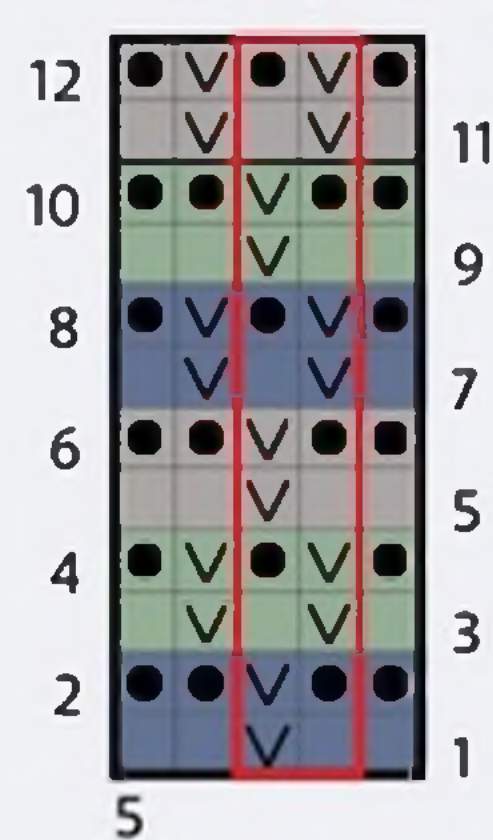


Chart B:
Moss slip stitch pattern



KEY

- Knit on RS, Purl on WS
- Purl on RS, Knit on WS
- K2tog on RS, P2tog on WS
- P2tog on RS, K2tog on WS
- Sl 1 purlwise wyib on RS, Sl 1 purlwise wyif on WS
- Yarnover
- Using yarn B
- Using yarn C
- Using yarn D
- Pattern repeat

With RS facing, 5.5mm needles and yarn A (still attached to edging), pick up and knit 49 sts (1 st in every 2 rows) along the straight edge of the lace (omitting the rows worked in waste yarn).

Row 1 (WS): P1 (1:1:2:2:2:3:3:2:2), P2tog, *P3 (3:3:4:4:4:6:6:12:12), P2tog; rep from * 8 (8:8:6:6:6:4:4:2:2) more times, P1 (1:1:3:3:3:4:4:3:3).
39 (39:39:41:41:41:43:43:45:45) sts.

Starting with a knit row, work 4 rows in st st. Break yarn and transfer sts to a holder.

MOSS SLIP STITCH OVER-CUFF

With 5.5mm needles and yarn A, cast on 41 (41:41:43:43:43:45:45:47:47) sts.

Row 1 (RS): Purl.

Row 2: Knit.

Break off yarn A and change to 4.5mm needles.

Row 3: In yarn C, K3 (3:3:4:4:4:5:5:6:6), *M1, K2; rep from * 17 more times, K2 (2:2:3:3:3:4:4:5:5).

59 (59:59:61:61:61:63:63:65:65) sts.

Row 4 (WS): Reading from left to right, work from row 2 of chart B.

Row 5: Reading from right to left, work from row 3 of chart B.

Last 2 rows set chart B patt. Cont to work from chart B until row 6 is complete for the second time.

Break off yarns B, C and D.

Change to 5.5mm needles.

Row 21: Join in yarn A, K0 (0:0:1:1:1:2:2:3:3), K2tog, *K1, K2tog; rep from * 18 more times, K0 (0:0:1:1:1:2:2:3:3).

39 (39:39:41:41:41:43:43:45:45) sts.

Change to 6mm needles.

Row 22: *KS; rep from * to last st, K1.

JOIN OVER AND UNDER CUFFS

Row 1 (RS): Transfer Lace under-cuff sts to a LH needle, place under Moss Stitch over-cuff, needles aligned, tips pointing to RH side. Insert tip of RH (4.5mm) needle into the first Upper cuff and then first Lower cuff st and with yarn A, knit the two sts together. Rep with all the cuff sts until both cuffs are joined.

Change to 6mm needles and Knot Stitch.

Row 2: K1, *KS; rep from * to end of row.

Row 3: Knit.

Row 4: *KS; rep from * to last st, K1.

Row 5 (inc): K1, M1, knit to last st, M1, K1. Cont in Knot stitch patt (starting at row 2) inc 1 st at each end of 5 (6:7:7:9:10:11:12:12:13) foll 12th (10th:8th:8th:6th:6th:5th:5th:5th:5th) rows.

51 (53:55:57:61:63:67:69:71:73) sts.

Cont in Knot Stitch for 7 (9:13:13:15:11:16:11:11:6) rows without further shaping, thus ending with RS facing for next row.

SHAPE SLEEVE TOP

Cast off 3 (4:4:4:5:5:5:6:6) sts at beginning of the next two rows.

45 (45:47:49:51:53:57:57:59:61) sts.

Row 3: K1, K2tog, knit to last 3 sts, SSK, K1.

Row 4: K1, K2tog, patt to last 3 sts, SSK, K1.

Working all decs as set by last 2 rows, dec 1 st at each end of next 3 (3:3:3:3:3:5:5:5:7) rows, and then on 3 (3:3:4:4:4:4:5:6:6) foll alt rows.

29 (29:31:31:33:35:35:33:31) sts.

Work 5 (5:5:3:3:1:1:1:1) rows without further shaping.

Dec 1 st at each end of next and 3 (3:4:4:5:6:5:4:4:3) foll alt rows.

21 (21:21:21:21:21:23:23:23:23) sts.

Dec 1 st at each end of next row (WS), then cast off 3 sts at beg of next 2 rows.

13 (13:13:13:13:13:15:15:15:15) sts.

Cast off 4 sts at beg of next 2 rows.

Cast off rem 5 (5:5:5:5:5:7:7:7) sts.

INTERIM MAKING UP

Weave in all loose ends.

Block all pieces to measurements, following any yarn care instructions on the ball band.

Join shoulder seams.

COLLAR

LACE UNDER-COLLAR

With 4.5mm needles and yarn A, cast on 6 sts and work from chart A as previously. Repeat 20 rows of chart 7 (8:8:8:8:8:9:9:9) times in total, casting off on the last row (leave yarn A attached).

Change to 5.5mm needles.

With RS facing, 5.5mm needles and yarn A (still attached to edging), pick up and knit 70 (80:80:80:80:80:90:90:90:90) sts (1 st for every 2 rows) along the straight edge of the lace.

Size 8 only

Row 1 (WS): P35, M1, purl to end. 71 sts.

Sizes 10 to 26 only

Row 1 (WS): *P- (8:18:18:38:38:13:13:13:13), P2tog; rep from * - (6:2:2:0:0:4:4:4:4) more times, purl to end.

- (73:77:77:79:79:85:85:85:85) sts.

All sizes

Starting with a K row, work 5 rows in st st. Break off yarn and leave sts on a holder.

OVER-COLLAR

With 5.5mm needle, yarn A and WS facing, pick up and knit 21 (21:23:23:23:23:25:25:25:25) sts from Left Front neck marker to left shoulder, pick up & knit 5 sts to back neck, pm (marker L), K11 (13:13:13:15:15:17:17:17:17) from back neck holder, pm (marker R), pick up and knit 5 sts to right shoulder and 21 (21:23:23:23:23:25:25:25:25) sts to Right Front neck marker.

63 (65:69:69:71:71:77:77:77:77) sts.

Row 2: P to marker L, slm, w&t.

Row 3: K to marker R, slm, w&t.

Row 4: P to marker L, rm, P5, pm, w&t. ▶

Swinford

Row 5: K to marker R, rm, K5, pm, w&t.

Row 6: P to marker L, slm, P5, w&t.

Row 7: K to marker R, slm, K5, w&t.

Row 8: P to end.

Change to 6mm needle and Knot Stitch.

Rows 1 & 2: Work 2 rows in Knot Stitch, slipping markers.

Row 3: *Knit to 1 st before marker, KFB, slm, KFB; rep from * once more, knit to end.

Rows 4 to 6: Patt 3 rows in Knot Stitch.

Row 7: As row 3.

Row 8: Patt to end, removing markers.

71 (73:77:77:79:79:85:85:85:85) sts.

JOIN OVER- AND UNDER-COLLARS

Row 1 (RS): Return Lace Under-collar sts to 5.5mm needles. Hold Lace Under-Collar, beneath Collar, needles aligned, tips pointing to RH side, wrong sides together. *Insert tip of RH (5.5mm) needle into the first Upper Collar and first Lower Collar st and with yarn A, knit the two sts together; rep from * 2 (0:0:0:2:2:0:0:0:0) more times, **knit next st from front needle, knit next st from back needle, knit following front and back needle sts together (total of 4 sts reduced to 3); rep from ** to end.

105 (109:115:115:117:117:127:127:127) sts.

Change to 4.5mm needles.

Row 2 (WS): Work from chart B row 6 (using yarn A).

Break off yarn A.

Starting with row 7, work 17 rows from chart B.

Row 20 (WS): With yarn B, purl to end.

Break off all yarns. Leave sts on needle.

COLLAREDGING

Row 1: With RS of Collar facing, 5.5mm needle, yarn A and starting at row-end edge of Over-Collar (where the first collar st was picked up from neckline edge of Left Front), pick up and knit 8 sts to start of Moss Slip Stitch, then pick up and knit 8 sts to last row of Over-Collar inserting needle through both Over- and Under-Collars (end at middle of cast-on edge of Lace Under-Collar), pm, work across Over-Collar sts as foll: K3 (1:1:1:3:3:1:1:1:1), *K2tog, K1; rep from * to end, pm, pick up and knit 16 sts along row-end edge to match beginning of collar edging.

103 (105:109:109:111:111:117:117:117) sts.

Row 2 (WS): *Knit to 1 st before marker, KFB, slm, KFB; rep from * once more, knit to last 3 sts, w&t.

Row 3: *Purl to 1 st before marker, KFB,

slm, KFB; rep from * once more, purl to 3 sts before end, w&t.

Row 4: Knit to end removing markers. Cast off knitwise (fairly loosely).

FRONT BANDS

BUTTONBAND

With RS of Left Front facing, 4.5mm needles, yarn B and starting at two rows below start of neckline shaping, pick up and knit 114 (114:114:114:116:116:116:118:118) sts ending at the first row of Knot Stitch (omitting cast-on and rev st st rows).

Next row (WS): K1, PFB, [Sl1 wyif, K1] 0 (0:0:0:1:1:1:2:2) times, *PFB, (Sl1 pwise wyif, K1) twice; rep from * to last 2 sts, Sl1 pwise wyif, K1.

137 (137:137:137:139:139:139:141:141) sts.

Work 17 rows from chart B, starting at row 1, ending after a row 5 in yarn B.

Row 20 (WS): With yarn B, purl to end. Break off all yarns. Leave sts on needle.

BUTTONBAND EDGING

With RS of Band facing, 5.5mm needle, yarn A and starting at top edge (neck marker), pick up and knit 8 sts along row-end edge of buttonband, pm, work along band sts as foll: K2 (2:2:2:1:1:1:0:0), *K2tog, K1; rep from * to end of sts, pm, pick up and knit 8 sts along bottom edge of band (ending at top row of rev st st), pm, pick up and knit 1 st.

109 (109:109:109:110:110:110:111:111) sts.

Row 2 (WS): KFB, slm, *knit to 1 st before marker, KFB, slm, KFB; rep from * once more, knit to end.

Row 3: *Purl to 1 st before marker, PFB, slm, PFB; rep from * twice more.

Row 4: Knit to end removing markers. Cast off knitwise (fairly loosely).

BUTTONHOLE BAND

Wind off approximately 4m of yarn C (or preferred shade to match buttons). With RS of Right Front facing, 4.5mm needles, yarn B and starting at the first row of Knot Stitch (omitting cast-on and rev st st rows), pick up and knit 114 (114:114:114:116:116:116:118:118) sts ending two rows below start of neckline shaping.

Work as for buttonband until 8 rows of chart B patt have been completed.

Row 11: Patt 55 (55:55:55:57:57:57:59:59), *pm, patt 6 sts, slip these sts back onto the LH needle, cast them off with yarn C, cast on 6 sts in same yarn, slip these 6 sts onto the RH needle (cut off this yarn and cont

with yarn D as usual), patt 18 (24 sts in total from marker); rep from * two more times, patt 6 sts, slip these sts back onto the LH needle, cast them off with length of yarn C, turn, cast on 6 sts in same length of yarn, slip these onto the RH needle, patt to end. Complete as for buttonband, removing markers.

Starting at bottom edge instead of top edge, work edging as for Buttonband.

POCKETS (make 2 alike)

With 5.5mm needles and yarn A, cast on 17 sts.

Row 1 (WS): Knit.

Row 2: Purl.

Change to 4.5mm needles.

Row 3: P1, *M1P, P2; rep from * to end. 25 sts.

Break off yarn A.

Joining in yarns as required, and starting with row 1 work 23 rows from chart B (ending after a row 11).

Starting with row 1, work 48 rows from chart B (WS now becomes the RS).

Cast off in yarn B.

COMPLETING

Weave in any ends.

SLEEVES

Carefully remove waste yarn from lace edges and graft the two ends together. Complete the seam up to the join with the Over Cuff. Sew sleeve seam from cast-on edge of Over Cuff to armhole making sure the Lace section is kept free. Fit sleeve into armhole.

COLLAR AND FRONT BANDS

Gently press or steam collar and bands allowing cast-off edges to roll under.

Catch down cast-off edges of bands on WS. Allow bottom edge to lie over the Garter Stitch rows of the cast-on edge of Jacket and sew in place. Sew row ends at top of bands to Left and Right Front edges and row ends of collar to meet the bands. Sew on buttons to match buttonholes.

Fold over 4cm of pocket top. Find centre of pocket, align with pocket placement marker (adjust to suit if desired). Sew in place along bottom and side edges catching down folded over pocket top. ☺