





MUIR WRAP

Ann McDonald Kelly

Finished Size 74" wide (excluding fringe) and 14" tall.

Yarn Berroco Vintage DK (50% acrylic, 40% wool, 10% nylon; 288 yd [263 m]/3½ oz [100 g]): #2145 cast iron (black, A), #2134 sour cherry (red, B), #2107 cracked pepper (gray, C), and #2156 cork (tan, D), 2 skeins each.

Needles Size 5 (3.75 mm): 60" circular (cir). Adjust needle size if necessary to obtain the correct gauge.

Notions Tapestry needle; size H/8 (5 mm) crochet hook.

Gauge 16 st-pairs and 30 rows = 4" in double knitting patt.

? See the Glossary on page 132 for terms you don't know. For our master glossary, visit KnittingDaily.com/glossary.

NOTES

- This wrap is worked back and forth using a double knitting technique. In double knitting, two layers of fabric are created simultaneously. In the following instructions, the layers are identified as Side 1 and Side 2. Side 1 reflects the color assignments shown on the chart; on Side 2, the motifs and chart colors are reversed.

- Each square on the chart represents a pair of stitches, a knit stitch and a purl stitch. Odd-numbered chart rows are read from right to left and worked with Side 1 facing. Knit with the color shown on the chart and purl with the opposite color for each stitch on the chart. Even-numbered chart rows are read from left to right and worked with Side 2 facing. Knit with the color opposite of the one shown on the chart and purl with the color shown for each stitch on the chart.
- The term "st-pair" refers to a knit/purl pair of stitches.
- Before knitting a stitch, bring both yarns to the back of the work; before purling a stitch, bring both yarns to the front of the work.
- Twist the working yarn around the non-working yarn at the beginning of each row to avoid having the two faces of your work separate at the sides.
- The first eight rows of the chart are worked with colors A and B, and the second eight rows are worked with C and D. Break yarns after every eight rows and rejoin two new colors for next eight rows.



on odd rows, bring both yarns to back and k1 with A; bring both yarns to front and p1 with B
on even rows, bring both yarns to back and k1 with B; bring both yarns to front and p1 with A



on odd rows, bring both yarns to back and k1 with B; bring both yarns to front and p1 with A
on even rows, bring both yarns to back and k1 with A; bring both yarns to front and p1 with B



on odd rows, bring both yarns to back and k1 with C; bring both yarns to front and p1 with D
on even rows, bring both yarns to back and k1 with D; bring both yarns to front and p1 with C

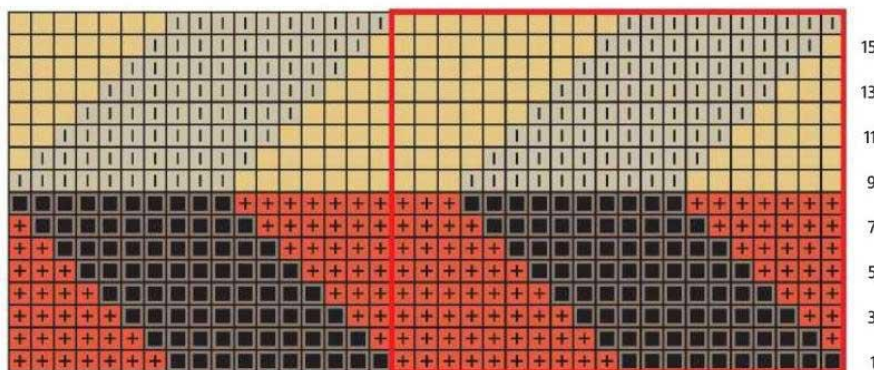


on odd rows, bring both yarns to back and k1 with D; bring both yarns to front and p1 with C
on even rows, bring both yarns to back and k1 with C; bring both yarns to front and p1 with D



pattern repeat

Side 1



20 st-pair repeat

- A circular needle is used to accommodate the large number of stitches.

WRAP

With A and using the long-tail method, CO 594 sts. Do not join. **Next row** *K1, p1; rep from * to end. Work Side 1 chart as foll (see Notes):

Row 1 (Side 1 facing) *[With both yarns in back, k1 with A; with both yarns in front, p1 with B] 10 times, [with both yarns in back, k1 with B; with both yarns in front, p1 with A] 10 times; rep from * 13 more times, [with both yarns in back, k1 with A; with both yarns in front, p1 with B] 10 times, [with both yarns in back, k1 with B; with both yarns in front, p1 with A] 7 times.

Row 2 (Side 2 facing) [With both yarns in back, k1 with A; with both yarns in front, p1 with B] 6 times, [with both yarns in back, k1 with B; with both yarns in front, p1 with A] 10 times, *[with both yarns in back, k1 with A; with both yarns in front, p1 with B] 10 times, [with both yarns in back, k1 with B; with both yarns in front, p1 with A] 10 times; rep from * 13 more

times, with both yarns in back, k1 with A; with both yarns in front, p1 with B. Cont in patt until Rows 1–16 of chart have been worked 6 times, then work Rows 1–8 once more. Break B and cont with A only. **Next row** *K1, p1; rep from * to end. BO all sts as foll: Ssk, *ssk, pull first st on right needle over 2nd st; rep from * to last st. Fasten off last st.

FINISHING

Weave in ends. Block to measurements.

Fringe: Cut 224 strands of A, each about 12" long. Hold 8 strands tog and fold in half. Using crochet hook, pull fold through st on shorter end of wrap, then pull ends of strands through fold to secure. Attach 14 fringes to each short end of wrap, placing 1 at each corner and 1 at each 8-row color change. Trim ends.

Ann McDonald Kelly is always either knitting or thinking about knitting. Her four twenty-something daughters are always helpful with suggestions for future projects!

