





Marie Wallin  
Mika

## SIZE

	S	M	L	XL	XXL	
TO FIT BUST	81-86	91-97	102-107	112-117	122-127	cm
	32-34	36-38	40-42	44-46	48-50	in
ACTUAL BUST	93	102	111	120	129	cm
	36½	40	43½	47	51	in
ACTUAL LENGTH	74	76	78	80	82	cm
	29	30	30¾	31½	32½	in
SLEEVE SEAM	44	45	46	46	46	cm
	17½	17¾	18	18	18	in

## YARN

**Rowan Felted Tweed** (DK weight; 70% lambs wool, 26% kid mohair, 4% nylon; 140m/50g balls)

<b>A CARBON</b> (159)	3	4	4	5	5	x50g BALLS
<b>C PINE</b> (158)	3	4	4	4	4	x50g BALLS
<b>D CLAY</b> (177)	3	3	4	4	4	x50g BALLS
<b>E GINGER</b> (154)	2	3	3	3	3	x50g BALLS
<b>F WATERY</b> (152)	2	2	2	2	2	x50g BALLS
<b>G RAGE</b> (150)	3	3	3	3	3	x50g BALLS

**Rowan Kidsilk Aura** (Aran weight; 75% kid mohair, 25% silk; 75m/25g balls)

<b>B PLUMICE</b> (768)	7	8	9	10	11	x25g BALLS
---------------------------	---	---	---	----	----	------------

## NEEDLES & ACCESSORIES

1 pair 3mm (UK 11/US 2-3) knitting needles  
1 pair 3.25mm (UK 10/US 3) knitting needles  
1 pair 3.75mm (UK 9/US 5) knitting needles  
1 set 3.25mm (UK 10/US 3) circular needles  
1 set 3.75mm (UK 9/US 5) circular needles

## TENSION

Main body: 26 sts and 24 rows to 10cm over patterned st st using 3.75mm needles.

Sleeves and borders: 26 sts and 29 rows to 10cm over patterned st st using 3.25mm needles.

## PATTERN NOTES

All charts are read from right to left on RS rows (odd-numbered) and from left to right on WS rows (even-numbered). The Fair Isle technique is used for colourwork motifs; unused yarns are stranded at the WS of the work, and woven in if the yarn is carried over more than five stitches.

## BODY

The body is worked in one piece to the armholes.

Using 3.75mm circular needles and yarn A cast on 361 (385:409:433:457) sts.

Working first st as shown and repeating the 24 stitch marked patt rep 15 (16:17:18:19) times across each row, using the Fair Isle technique work from chart A.

Repeating the 26 row patt rep throughout, cont to work straight until Body meas 32 (33:34:35:36) cm, ending with RS facing for next row.

### DIVIDE FOR ARMHOLES

**Next row (RS):** Keeping pattern correct, patt 117 (124:132:140:148) sts and slip these sts onto a holder for Right Front, cast off next 6 (8:8:8:8) sts, patt until there are 115 (121:129:137:145) sts on right needle after cast-off and slip these sts onto a second holder for Back, cast off next 6 (8:8:8:8) sts, patt to end.

Now working on straight needles, instead of circular needles, cont as follows:

### LEFT FRONT

Work on this last set of 117 (124:132:140:148) sts only for Left Front.

Keeping patt correct, dec 1 st at armhole edge of next 4 rows, then on foll 4 (6:6:6:6) alt rows, then on 2 (1:1:1:1) foll 4th rows. 107 (113:121:129:137) sts.

Cont straight until armhole meas 22 (23:24:25:26) cm, ending with RS facing for next row.  
Cast off.

### BACK

With WS facing, rejoin yarns to 115 (121:129:137:145) sts on 2nd holder and shape Back as follows:  
Keeping patt correct, dec 1 st at each end of next 4 rows, then on foll 4 (6:6:6:6) alt rows, then on 2 (1:1:1:1) foll 4th rows. 95 (99:107:115:123) sts.

Cont straight until Back matches Left Front

to cast-off edge, ending with RS facing for next row.

Cast off.

### RIGHT FRONT

With WS facing, rejoin yarns to 117 (124:132:140:148) sts on first holder and shape Right Front as follows:  
Keeping patt correct, dec 1 st at armhole edge of next 4 rows, then on foll 4 (6:6:6:6) alt rows, then on 2 (1:1:1:1) foll 4th rows. 107 (113:121:129:137) sts.

Cont straight until Right Front matches Left Front to cast-off edge, ending with RS facing for next row.  
Cast off.

## SLEEVES

Using 3mm needles and yarn A cast on 57 (59:63:63:65) sts.

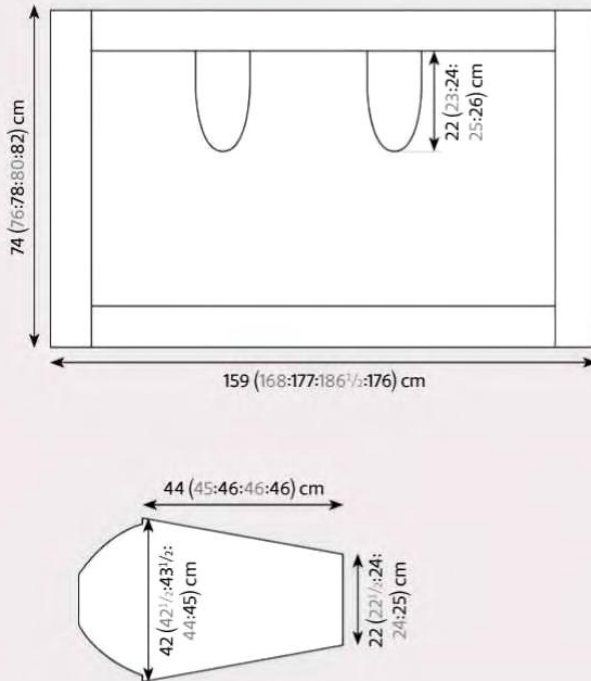
**Row 1 (RS):** K1, \*P1, K1; rep from \* to end.

**Row 2:** As row 1.

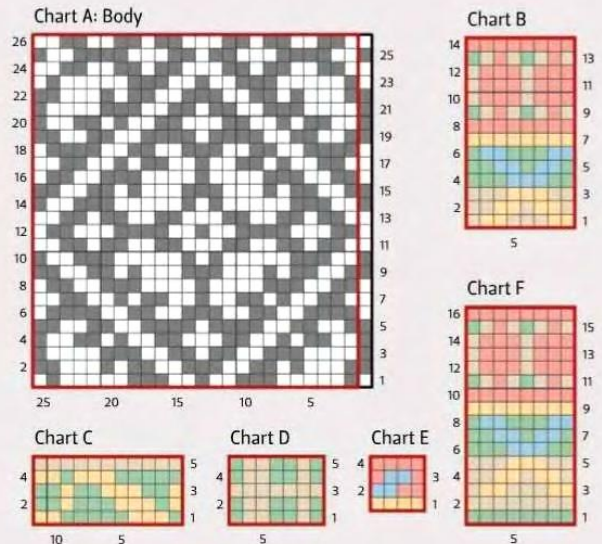
These 2 rows form moss st.

Work in moss st for a further 6 rows, ending with RS facing for next row.

## BLOCKING DIAGRAM



## CHARTS



## KEY

- Yarn A; K on RS, P on WS
- Yarn B; K on RS, P on WS
- Yarn C; K on RS, P on WS
- Yarn D; K on RS, P on WS
- Yarn E; K on RS, P on WS
- Yarn F; K on RS, P on WS
- Yarn G; K on RS, P on WS
- Pattern repeat

For stockists and abbreviations, see p91

Change to 3.25mm needles.

**Next row (RS):** Using yarn C, knit.

**Next row (WS):** Using yarn D, purl.

Repeating motifs as necessary across rows, and using the Fair Isle technique, repeat all 28 rows of charts B to E in order throughout, and work shaping as foll:  
Inc 1 st at each end of 3rd and every foll 4th row to 105 (105:101:107:109) sts, then on 2 (3:6:4:4) foll 6th rows, taking inc sts into patt. 109 (111:113:115:117) sts.

Cont straight until sleeve meas

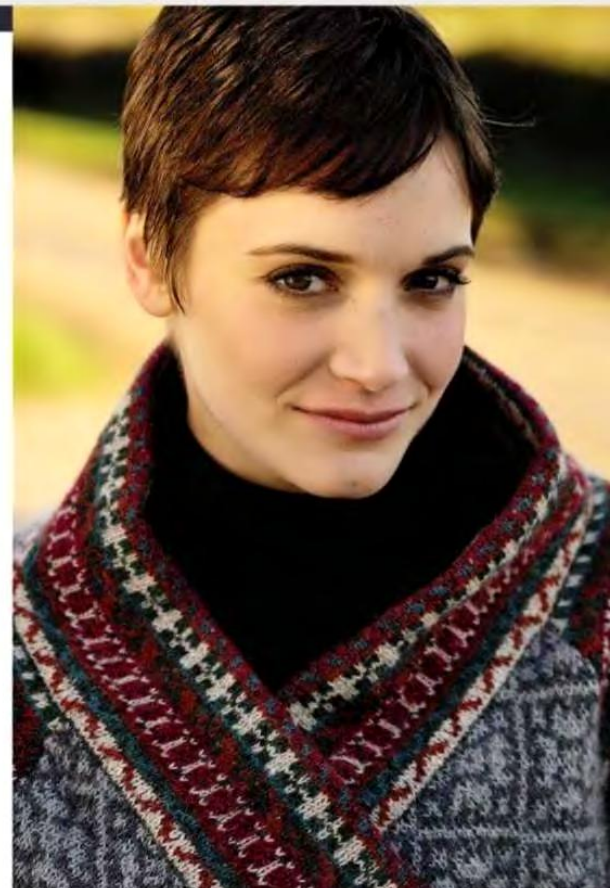
44 (45:46:46:46) cm, ending with RS facing for next row.

### SHAPE TOP

Keeping patt correct, cast off 4 (5:5:5:5) sts at beg of next 2 rows, then 3 sts at beg of foll 2 rows. 95 (95:97:99:101) sts.

Dec 1 st at each end of next 9 rows, then on foll 3 (9:10:11:12) alt rows, then on foll 15 (5:5:5:5) rows, ending with RS facing for next row. 41 (49:49:49:49) sts. ▶

Fair Isle borders are folded back, so they look just as beautiful from both sides



# Mika

## In detail Picking up stitches

The Fair Isle borders are picked up and knitted from the body of the cardigan. In order to pick up the stitches evenly, it is a good idea to divide the length into equal sections, using markers. Then you can be sure to spread them out neatly.

If you don't end up picking up exactly the correct number of stitches, there's no need to start again – you can just decrease or increase a stitch or two on the first row.

Cast off 3 (4:4:4:4) sts at beg of next 2 rows, then 4 (5:5:5:5) sts at beg of foll 2 rows. Cast off rem 27 (31:31:31:31) sts.

### MAKING UP

Press gently, following any yarn care instructions on the ball bands.

### HEM BORDER

With RS facing, using 3.25mm circular needle and yarn C, pick up and knit 361 (385:409:433:457) sts along cast-on edge of Body.

Using the Fair Isle technique and repeating motifs as necessary along the row, now work in patt from charts in stocking stitch beg with a purl row.

**Rows 1 to 16:** Work 16 rows as set on chart F.

**Rows 17 to 21:** Work 5 rows as set on chart C.

**Rows 22 to 26:** Work 5 rows as set on chart D.

**Rows 27 to 30:** Work 4 rows as set on chart E.

Rep rows 1 to 28 once.

Cast off.

Fold border in half to inside and slip stitch in place.

Join sleeve seams. Matching final cast-off edge of sleeve to cast-off edge of body, sew sleeves into armholes.

### TOP BORDER

With RS facing, using 3.25mm circular needle and yarn C, pick up and knit 107 (113:121:129:137) sts from cast-off edge of Right Front, 26 (30:30:30:30) sts from cast-off edge of right Sleeve, 95 (99:107:115:123) sts from cast-off edge of Back, 26 (30:30:30:30) sts from cast-off edge of left Sleeve, then 107 (113:121:129:137) sts from cast-off edge of Left Front. 361 (385:409:433:457) sts.

Work as given for hem border.

Cast off.



Fold border in half to inside and slip stitch in place.

### FRONT BORDERS

(Work both alike)

With RS facing, using 3.25mm circular needle and yarn C, pick up and knit 193 (195:199:203:207) sts evenly along one front opening edge, between folded edges of hem and top borders.

Using the Fair Isle technique and repeating motifs as necessary along the row, now work in patt from charts in stocking stitch

beginning with a purl row.

**Rows 1 to 16:** Work 16 rows as set on chart F.

**Rows 17 to 21:** Work 5 rows as set on chart C.

**Rows 22 to 26:** Work 5 rows as set on chart D.

**Rows 27 to 30:** Work 4 rows as set on chart E.

Rep rows 1 to 28 once.

Cast off.

Fold border in half to inside and slip stitch in place.

### FINISHING

Weave in all ends and block gently to measurements. ☺