

*Edith*





Martin Storey  
**Edith**

**BY COMBINING** strands of Rowan's luxurious Kidsilk Haze mohair yarn and a metallised thread, Martin Storey has been able to create a stunning fabric for his V-neck jumper. It's a warm, cosy, shimmering garment that's so wearable - we'd be as happy teaming this with jeans and boots at the weekend as with a sparkly skirt for winter parties.

## BACK

Using 2.75mm needles and one strand each of yarn A and B held together, cast on 130 (136:144:154:164:174:184:194) sts.

**Row 1 (RS):** K2 (1:1:2:1:2:1:2), \* P2, K2; rep from \* to last 0 (3:3:0:3:0:3:0) sts, (P2, K1) 0 (1:1:0:1:0:1:0) times.

**Row 2:** P2 (1:1:2:1:2:1:2), \* K2, P2; rep from \* to last 0 (3:3:0:3:0:3:0) sts, (K2, P1) 0 (1:1:0:1:0:1:0) times.

These 2 rows set rib.

Work 38 (38:38:38:42:42:42:42) rows more in rib, inc 1 st at each end of last row, ending with RS facing for next row.

132 (138:146:156:166:176:186:196) sts.

Change to 3.25mm needles and cont to work from chart as follows:

**Row 1:** Beg with st 4 (1:7:2:7:2:7:2), work in 10 st rep as set on row 1 of chart, ending with st 5 (8:2:7:2:7:2:7).

## SIZE

	8	10	12	14	16	18	20	22	
TO FIT BUST	81	86	91	97	102	107	112	117	cm
	32	34	36	38	40	42	44	46	in
ACTUAL BUST	86	90	94	100	106	112	118	124	cm
	34	35	37	39	42	44	46	49	in
ACTUAL LENGTH	56	56	56	59	59	61	61	63	cm
	22	22	22	23	23	24	24	25	in
SLEEVE SEAM	45	45	46	46	47	47	47	47	cm
	17½	17½	18	18	18½	18½	18½	18½	in

## YARN

**Rowan** Kidsilk Haze (Laceweight; 70% silk, 30% mohair; 210m/229yds per 25g ball)

<b>A</b> HIBISCUS 665	7	7	8	8	9	10	10	11	x25g BALLS
-----------------------	---	---	---	---	---	----	----	----	------------

**Anchor** Artiste Metallic Fine (Thread; 80% viscose, 20% metallised polyester; 250m/273yds per 25g ball)

<b>B</b> SILVER 301	6	6	7	7	8	9	9	10	x25g BALLS
---------------------	---	---	---	---	---	---	---	----	------------

## NEEDLES & ACCESSORIES

1 pair 3.25mm (UK 10/US 3) straight knitting needles  
1 pair 2.75mm (UK 12/US 2) straight knitting needles  
1 set 2.75mm (UK 12/US 2) circular knitting needles, 60cm long  
1 cable needle

## TENSION

34 sts and 32 rows to 10cm measured over body patt unstretched using 3.25mm needles and one strand each of yarn A and B held together

## SPECIAL ABBREVIATIONS

**C4B(F):** Slip next 2 sts on to a cable needle and hold in back (front) of work, K2 then K2 from cable needle.

### Size 8 only

Note that it will not be possible to work the first and last cables of the row until you have increased 2 more sts at each end of row as given in the following increase section.

### All sizes

This row sets chart placement, cont to work in 8 row rep as set on chart, AT SAME TIME inc 1 st at each end of 7th and 2 foll 8th rows, then on 4 foll 10th rows, working inc sts into pattern.

146 (152:160:170:180:190:200:210) sts. \*\*

Cont without shaping until work meas 35 (35:34:37:36:38:37:39) cm, ending with RS facing for next row.

### SHAPE ARMHOLES

Cast off 9 (10:10:11:11:12:13:14) sts at the beg of the next 2 rows.

128 (132:140:148:158:166:174:182) sts.

Dec 1 st at each end of next 5 (5:7:9:11:11:13:13) rows, then on 3 (3:4:3:4:5:5:5) foll alt rows, then on 2 (2:1:1:1:1:1) foll 4th rows.

108 (112:116:122:126:132:136:144) sts.

Cont without shaping until armhole meas 20 (20:21:21:22:22:23:23) cm, ending with RS facing for next row.

### SHAPE BACK NECK AND SHOULDERS

Cast off 9 (10:11:12:12:13:13:15) sts at the beg of the next 2 rows.

**Next row:** Cast off 9 (10:11:12:12:13:13:15) sts, patt until 14 (14:14:15:15:16:18:18) sts on RH needle, turn and cont on these sts only.

**Next row:** Cast off 4 sts, patt to end.

10 (10:10:11:11:12:14:14) sts.

Cast off rem sts.

With RS facing, rejoin yarn to rem sts and cast off the first 44 (44:44:44:48:48:48:48) sts, patt to end.

Complete to match first side neck, reversing all shapings.

## FRONT

Work as given for Back to \*\*.

Cont without shaping until 6 rows less have been worked than on Back to start of armhole shaping, ending with RS facing for next row. (Work should now measure approx. 2cm less than Back to armhole.)

### SHAPE NECK

**Next row:** Patt 73 (76:80:85:90:95:100:105) sts, turn and cont on these sts only. Leave rem sts on a holder.

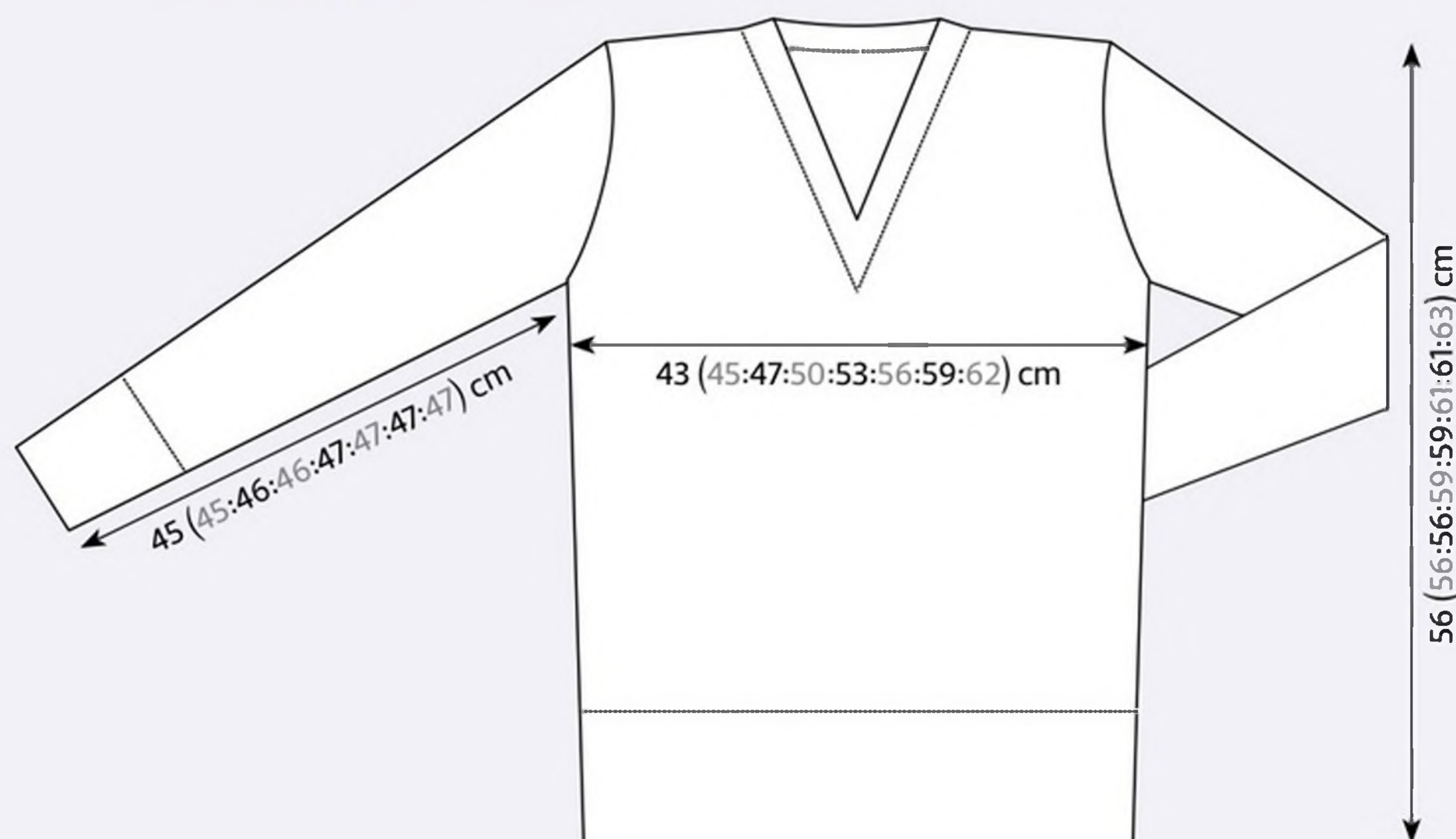
Work 1 row.

Work 4 rows, dec 1 st at neck edge of next and foll alt row, ending with RS facing for next row. 71 (74:78:83:88:93:98:103) sts.

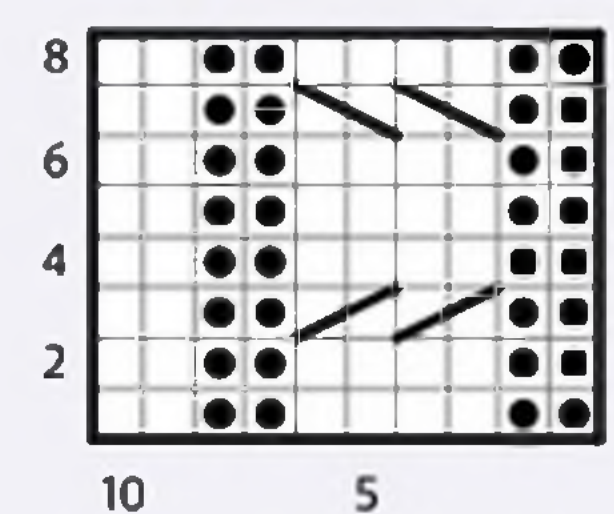
### SHAPE ARMHOLE

**Next row:** Cast off 9 (10:10:11:11:12:13:14) sts,

**BLOCKING DIAGRAM**



**CHART**



**KEY**

- K on RS, P on WS
- P on RS, K on WS
- C4B
- C4F

The 'wiggle' ribbing is really effective

patt to last 2 sts, patt 2 tog.  
61 (63:67:71:76:80:84:88) sts.  
Work 1 row.

Dec 1 st at armhole edge of next 5 (5:7:9:11:11:13:13) rows, then on 3 (3:4:3:4:5:5:5) foll alt rows, then on 2 (2:1:1:1:1:1) foll 4th rows and AT SAME TIME dec 1 st at neck edge of next and every foll alt row to end of armhole shaping.

Dec 1 st at neck edge ONLY of 2nd and 6 (6:2:1:4:3:2:1) foll alt rows, then on every foll 4th row to 28 (30:32:35:35:38:40:44) sts. Cont without shaping until armhole matches back to start of shoulder shaping, ending with RS facing for next row.

**SHAPE SHOULDER**

Cast off 9 (10:11:12:12:13:13:15) sts at beg of next and foll alt row.  
10 (10:10:11:11:12:14:14) sts.  
Work 1 row. Cast off rem sts.

With RS facing, rejoin yarn to rem sts and patt to end.  
Complete to match first side of neck, reversing all shapings.

**SLEEVES**

Using 2.75mm needles and one strand each of yarn A and B held together, cast on 78 (78:82:82:86:86:90:90) sts.  
**Row 1 (RS):** P2 (2:0:0:2:2:0:0), \* K2, P2, rep from \* to last 0 (0:2:2:0:0:2:2) sts, K0 (0:2:2:0:0:2:2).



# Edith

**Row 2:** K2 (2:0:0:2:2:0:0), \* P2, K2, rep from \* to last 0 (0:2:2:0:0:2:2) sts, P0 (0:2:2:0:0:2:2).  
These 2 rows set rib.

Cont in rib as set and AT SAME TIME inc 1 st at each end of 11th and 2 foll 12th rows.  
84 (84:88:88:92:92:96:96) sts.  
Work 1 row.

Change to 3.25mm needles.

**Row 1 (RS):** Beg with st 8 (8:6:6:4:4:2:2) and working in 10 st rep as set on row of chart throughout, patt to end, ending with st 1 (1:3:3:5:5:7:7).

## Sizes 12 to 18 only

Note that it will not be possible to work the first and last cables of the row until you have increased - (-:1:1:2:2:-:-) more sts at each end of row as given in the following increase section.

## All sizes

This row sets chart placement, working in 8 row rep as set on chart throughout, inc 1 st at each end of 3rd and 5 (7:10:2:1:10:16:23) foll 8th (6th:6th:4th:4th:4th:4th:4th) rows, then on every foll 10th (8th:8th:6th:6th:6th:6th:6th) row to 106 (112:118:122:126:132:140:146) sts, working inc sts into pattern.  
Cont without shaping until sleeve meas 45 (45:46:46:47:47:47:47)cm, ending with RS facing for next row.

## SHAPE SLEEVE TOP

Cast-off 9 (10:10:11:11:12:13:14) sts at the beg of the next 2 rows.  
88 (92:98:100:104:108:114:118) sts.  
Dec 1 st at each end of next 5 (5:5:5:5:11:11:15) rows, 5 (5:5:5:5:2:2:0) foll alt rows, 3 foll 4th rows, then on every foll alt row to 56 (56:56:56:58:58:58:58) sts.  
Dec 1 st at each end of next 7 rows.  
Cast off 4 (4:4:4:5:5:5:5) sts at beg of next 2 rows. 34 sts.  
Cast off rem 34 sts.

## MAKING UP

Join both shoulder seams.

## V NECK BORDER

With RS facing, yarns A and B held together and 2.75mm circular needle, starting at left shoulder seam, pick up and knit 76 (76:76:76:80:80:80:80) sts down left side of neck, then K1 from base of v-neck and mark this st with a coloured thread, 76 (76:78:78:80:80:82:82) sts up right side of neck, then 50 (50:52:52:54:54:56:56) sts from back neck.

203 (203:207:207:215:215:219:219) sts.

**Round 1 (RS):** (K2, P2) to within 4 sts of centre marked st, K2, K2tog tbl, K the marked st, K2tog, (K2, P2) to end.

This round sets the position of rib. Keeping rib correct proceed as follows:

**Round 2:** Rib to within 2 sts of marked st, K2tog tbl, K the marked st, K2tog, rib to end.

Cont to rep the last round until 11 rounds have been worked in all.

181 (181:185:185:193:193:197:197) sts.

Cast off in rib, decreasing either side of marked st as before.

Set in sleeves. Join underarm and side seams. ☺



Soft kid mohair and metallised thread create a stunning fabric